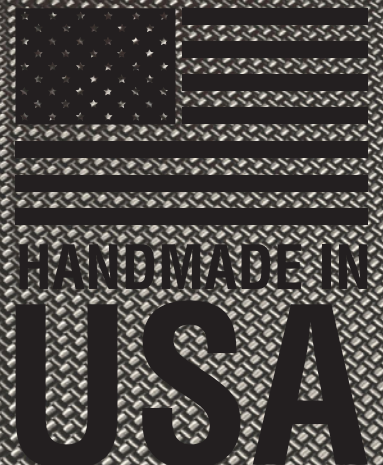


FACTORYCAT®

FULL LINE CATALOG



Free Demonstration At Your Facility!

800-634-4060

(+001)-262-681-3583

www.factorycat.com



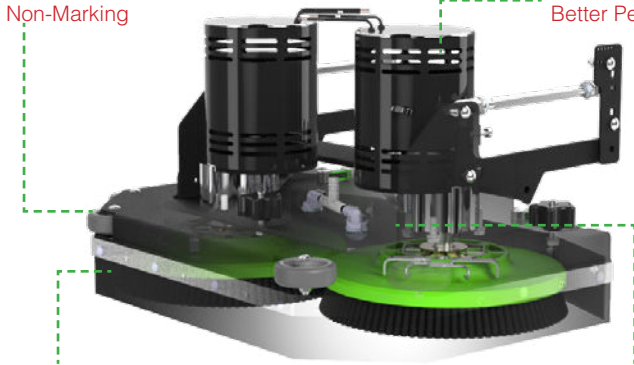
HANDMADE TOUGH IN USA

Since 1986, our family owned company has been designing, building and supporting the best in floor maintenance equipment. Our **FACTORYCAT** brand, services the world with unsurpassed industrial cleaning equipment, continually exceeding expectations, and setting the industry bar that much higher. We've built our reputation by providing the highest value machines and providing local support via 425 distributors in over 42 different countries.

TWO SCRUB SYSTEMS TO CHOOSE FROM

Corner Rollers
Non-Marking

HD Motors
Better Performance



Thick Steel Design
7-10g Thick for Durability

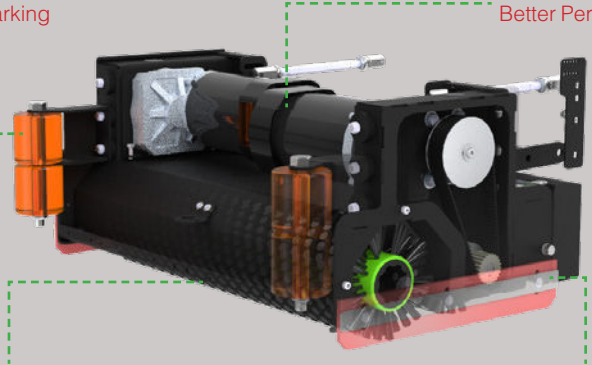
Aluminum Deck Design
Corrosion Resistance

Disk Benefits

- Brush / Pad Selection
- Lowest Maintenance Cost
- Gimballed Drivers Improves Cleaning On Irregular Floors
- Brushes Individually Driven For Unmatched Performance

Corner Rollers
Non-Marking

HD Motors
Better Performance

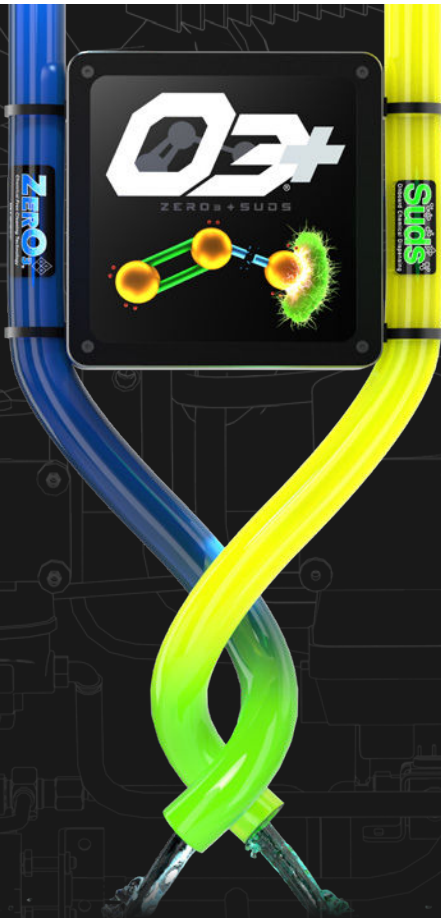


Oversized Brushes (6")
Longer Life

Thick Steel Design
7-10g Thick for Durability

Cylindrical Benefits

- Eliminates Dust Mopping
- Scrub & Sweep Simultaneously
- Superior Expansion Joint Cleaning



Clean Your Way - Onboard O3+®

In most applications, chemical-free cleaning results in acceptable levels of cleanliness. But, there are still applications and soil loads that require chemistry. In those cases, what do you do?

The **O3+® System** provides you two completely separate systems: ZER03® Aqueous Ozone (AO) system and Suds Chemical Dilution system.

With the ability to immediately dispense detergent or AO at the flip of a switch, we provide a system that is desired in today's market.



Reduce the Cost to Clean



Minimize Environmental Impact



Improve Facility Appearance



Easy Operation & Safe Handling of Chemicals

WALK BEHIND SCRUBBERS

The **FACTORYCAT** walk-behind scrubbers bring renowned toughness into the walk-behind auto scrubber market. Their compact length allows the battery scrubbers to maneuver into congested areas and their unique design keeps the scrub deck well protected. The large clean water and recovery tanks tip back for easy scheduled maintenance. Our thick steel frames and heavy duty components keep **FACTORYCAT** scrubbers working long after others have been discarded.



MICROMAG



MICROMINI



MICRO-HD



MINI-HD



MAG-HD

Disk Scrub Path:

17" & 20"
(43.2 & 51 cm)

17" & 20"
(43.2 & 51 cm)

17", 20", & 26"
(43.2, 51 & 66 cm)

26" & 28"
(66 & 71.1 cm)

30" & 34"
(76.2 & 86.4 cm)

Cylindrical Path:

N / A

N / A

25"
(63.5 cm)

25" & 29"
(63.5 & 73.7 cm)

29" & 33"
(73.7 & 83.8 cm)

Dimensions (LxWxH):

35" x 18" x 38"
(88.9 x 45.7 x 96.5 cm)

42" x 21" x 39"
(106.7 x 53.3 x 99.1 cm)

45" x 21" x 39"
(114.3 x 53.3 x 99.1 cm)

52" x 22" x 40"
(132.1 x 55.9 x 101.6 cm)

55" x 26" x 40"
(132.1 x 66 x 101.6 cm)

Solution / Recovery Tank:

10 Gal / 10 Gal
(37.6 / 37.6 liters)

10 Gal / 10 Gal
(37.6 / 37.6 liters)

13 Gal / 15 Gal
(49.2 / 56.8 liters)

21 Gal / 23 Gal
(79.5 / 87 liters)

35 Gal / 37 Gal
(132.5 / 140.1 liters)

Run Time:

Up to 2.5 Hours*

Up to 3.5 Hours*

Up to 2.5 Hours*

Up to 3.5 Hours*

Up to 5.0 Hours*

Theoretical Coverage:

Up to 15,748 sqft/hr
(1,436 sqm/hr)

Up to 15,748 sqft/hr
(1,436 sqm/hr)

Up to 27,027 sqft/hr
(2,510.9 sqm/hr)

Up to 27,027 sqft/hr
(2,510.9 sqm/hr)

Up to 31,915 sqft/hr
(2,965 sqm/hr)



Front Fill System
Operator Ergonomics for Easy Fill

Vacuum Screen Isolated
Extends Vacuum Motor Life

500 lb Actuator
Powerful Performance

Vacuum Box
Protects Vacuum Motor

HD Scrub Motors
Performance & Long Life

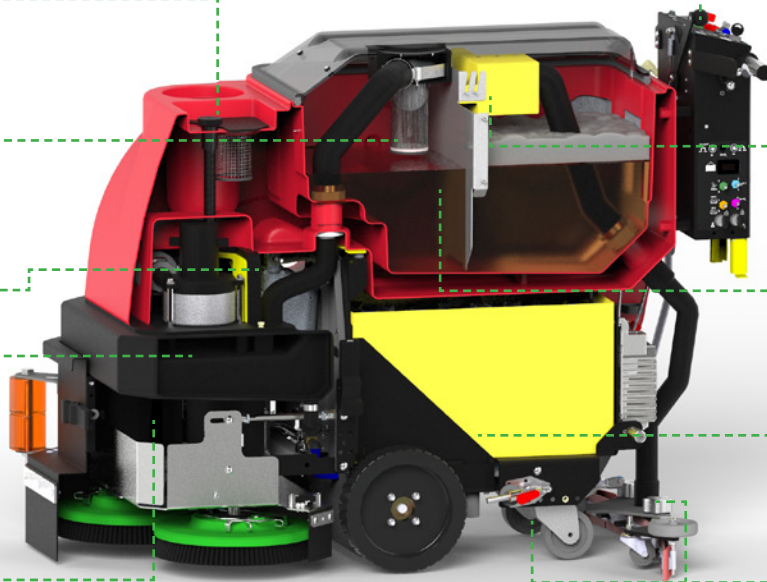
Marine Grade Controls
Easy Maintenance

Drain Saver Basket
Eliminates Clogged Floor Drains

Stainless Tank Baffle
Keeps Foam on "Dirty" Side

Poly Battery Box
Keeps Liquid Contained

Grey Wheels & Wall Rollers
Eliminates Skid Marks



RIDE-ON SCRUBBERS

The **FACTORYCAT** ride-on scrubber line offers customers an ideal and affordable solution to their floor cleaning needs. The three platforms include a powerful 36-volt system and heavy duty, steel construction for the most severe environments. Adjustable steering columns are standard, as is the front, steel apron which protects the operator's feet from collision. An American Made front wheel drive system allows for U-Turns within the machine's length, and unmatched maneuverability. Stainless fasteners and filter screens simplify service.



PILOT-HD



GTX-ST / GTX-HD

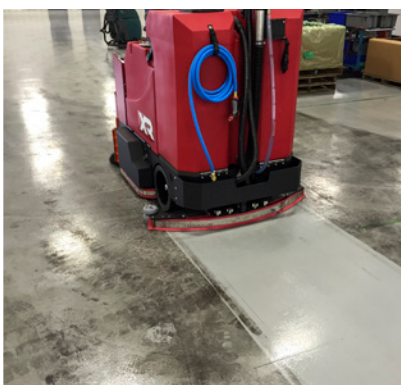


GTR-ST / GTR-HD



XR

Disk Scrub Path:	26" & 28" (66 & 71.1 cm)	26", 28", 30" & 34" (66, 71.1, 76.2 & 86.4 cm)	30" & 34" (76.2 & 86.4 cm)	34", 40" & 45" (86.4, 101.6 & 114.3 cm)
Cylindrical Path:	25" (63.5 cm)	25", 29" & 33" (63.5, 73.7 & 83.8 cm)	29" & 33" (73.7 & 83.8 cm)	34", 40" & 46" (86.4, 101.6 & 116.8 cm)
Dimensions (LxWxH):	48" x 24" x 55" (66 x 76.2 x 86.4 cm)	64" x 34" x 56" (162.6 x 86.4 x 142.2 cm)	64" x 37.8" x 57" (157.5 x 96 x 144.8 cm)	69" x 40" x 56" (175.3 x 91.4 x 142.2 cm)
Solution / Recovery Tank:	22 Gal / 23 Gal (83.3 / 87.1 liters)	33 Gal / 36 Gal (124.9 / 136.3 liters)	46 Gal / 49 Gal (174.1 / 185.5 liters)	65 Gal / 78 Gal (246.1 / 295.3 liters)
Run Time:	Up to 4.0 Hours*	Up to 4.5 Hours*	Up to 5.0 Hours*	Up to 5.0 Hours*
Theoretical Coverage:	Up to 26,745 sqft/hr (2,484.7 sqm/hr)	Up to 44,118 sqft/hr (4,099.0 sqm/hr)	Up to 46,643 sqft/hr (4,333.3 sqm/hr)	Up to 46,643 sqft/hr (4,333.3 sqm/hr)



Drain Saver Basket
Protect Your Drains

Vacuum Screen
Vacuum Motor Protection

Tip Back Tanks
Operator Ease for Draining

Vacuum Protection
& Muffler System

Service Cabinet
Single Point Service Location

Flip-up Bumper
Steel Bumper for Protection

HD Tires
Solid Tire Promotes Long Life



Dual Cup Holders
Operator Benefit

Indicator Dash Lights
Operator Ease

Heavy Duty Front Apron
Operator Foot Protection

Onboard Charger
Optional for CE or CEC certifications

Steel Frame
HD Frame for Long Life

Non-Marking Rollers
Machine Protection

SWEEPERS

The **FACTORYCAT** sweepers were built specifically with industrial cleaning needs in mind. They are built for: dirt, dust, metal shavings, foundry sand, bolts, paper, wood, whatever there is. These sweepers are all-steel and use oversized components throughout. The filter is cleaned by an on-board mechanism and will potentially last the life of the machine. No oil to change, fuel to spill, tanks to exchange, or valves to grind making our sweepers the easiest and most efficient to use on the market.



	34	TR
Sweep Path:	34" (86.4 cm)	46" (116.8 cm)
Main Broom:	26" x 10" (66 x 25 cm)	32" x 10" (81.3 x 25 cm)
Hopper Capacity:	2 cubic feet (56.6 liters)	4 cubic feet (113.3 liters)
Dimensions (LxWxH):	58" x 31" x 38" (147.3 x 78.7 x 96.5 cm)	64" x 37" x 55" (162.6 x 94 x 139.7 cm)
Run Time:	Up to 4 Hours	Up to 7 Hours
Theoretical Coverage:	Up to 30,000 sqft/hr (2,787.1 sqm/hr)	Up to 60,000 sqft/hr (5,574.2 sqm/hr)



Self Propelled
Operator Ease

Stainless Handlebar
Fully Adjustable

10" Diameter Main Broom
Reduces Maintenance

1/2 Ton Capacity Tire
Improved Manoeuvrability

Self Adjusting Main Belts
Reduces Down Time

Oversized Battery
Extends Run time

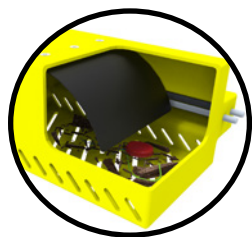
Onboard Charger
Permits Remote Charging

Baghouse Filter
High Capacity & Long Life

900 LB. Capacity Caster
Improved Manoeuvrability

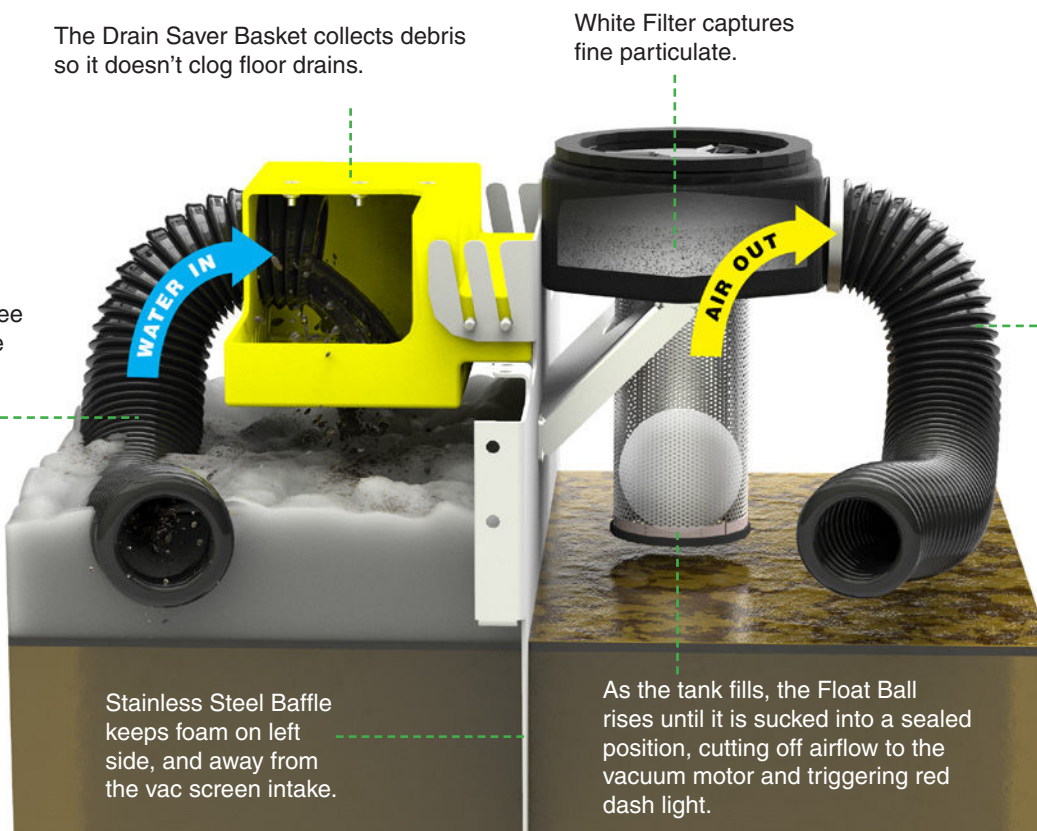
Large/Powerful Side Broom
Increases Productivity

BUILT-IN PROTECTION



The Drain Saver Basket collects debris so it doesn't clog floor drains.

Water from rear squeegee travels through this hose into the recovery tank.



White Filter captures fine particulate.

Airflow is drawn through this hose. Any water from this point will travel to the Yellow Vac Box.

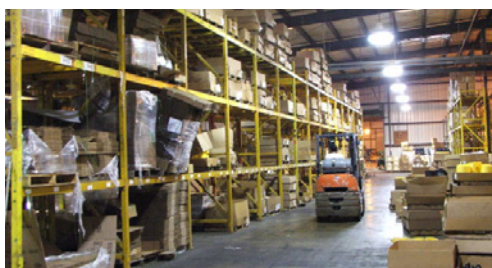
Stainless Steel Baffle keeps foam on left side, and away from the vac screen intake.

As the tank fills, the Float Ball rises until it is sucked into a sealed position, cutting off airflow to the vacuum motor and triggering red dash light.

AUTHORIZED DISTRIBUTOR

Manufactured By:
R.P.S. Corporation
1711 South Street
Racine, Wisconsin 53404 (USA)
Phone: (800) 634-4060
International: (+001) 262-681-3583
www.factorycat.com

Copyright R.P.S. Corporation 2018. All rights reserved.
Since our policy is one of constant improvement, all specifications are subject to change without notice.



APPLICATIONS

Fabrication Shops

Warehouses

Machine Shops

Automotive Shops

Car Dealerships

Government

Aviation

Food Packaging

Beverage Distribution

Sports Arenas

Saw Mills

Foundries